

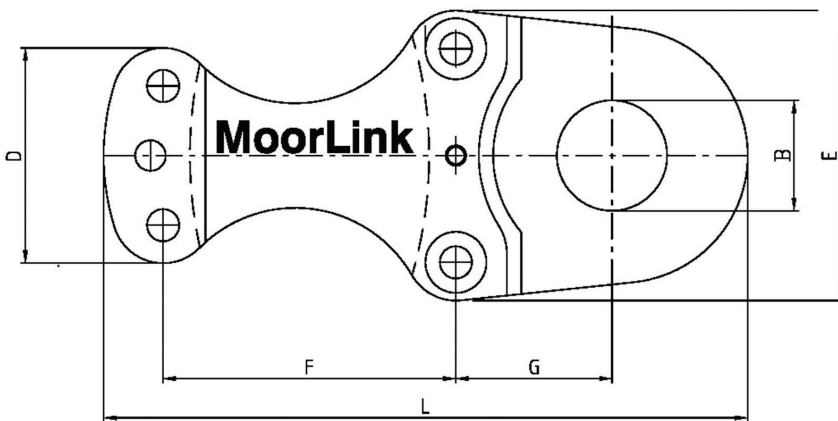


Chain Clamp

The MoorLink chain clamps are specially designed clamps developed to fit surface or sub-surface buoyancy to a mooring chain of any diameter. The clamps are cast in high-grade steel, heat treated for correct material characteristics and finally machined for a perfect fit. A special type and hardness of Nitril rubber is then vulcanized to the inside of the steel halves, avoiding steel to steel contact between chain and clamp.

See drawings and type examples listed below.

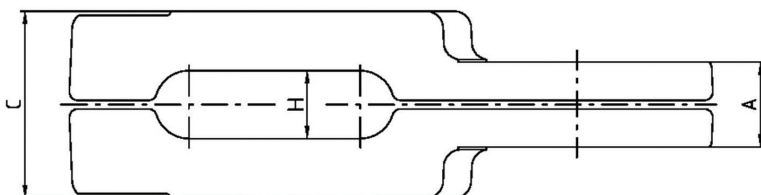
Please Note: Other types and sizes are available upon request.



Type	CC76	CC84
A (mm)	100	112
B (mm)	130	97
C (mm)	220	243
D (mm)	254	280
E (mm)	342	337
F (mm)	345	381
G (mm)	184	183
H (mm)	80	90
L (mm)	760	771

*Above are examples.
Other types and sizes are available*

Forged or Cast Grade 4 steel



MoorLink Solutions AB

Bror Nilssons gata 5, 417 55 Goteborg, Sweden

Phone: +46 31 301 2060, Fax: +46 31 708 79 00, E-mail: info@moorlink.se, Web: www.moorlink.com